

# Sine Plate

**54080**

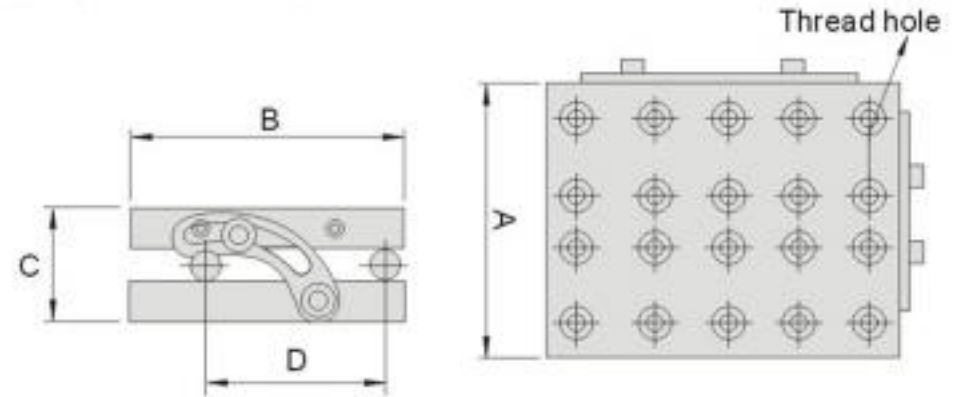
SP

Sine Plate



## Features :

- ▶ Tapped holes in top plate 3" x 6" , 5" x 6" for fixing workpieces.
- ▶ Squareness within 0.0002"
- ▶ Parallelism within 0.0002" / 4".
- ▶ Center distance of rolls within 0.0002".
- ▶ Adjustable angle 0-60°



Unit: Inch

Order No.	Model	A	B	C	D	Thread hole	N.W.
54080-15	SP36	3.228	6	2.205	5	1/4"-20UNC	4.2kg
54080-25	SP56	5	6	2.362	5		7kg

**54090**

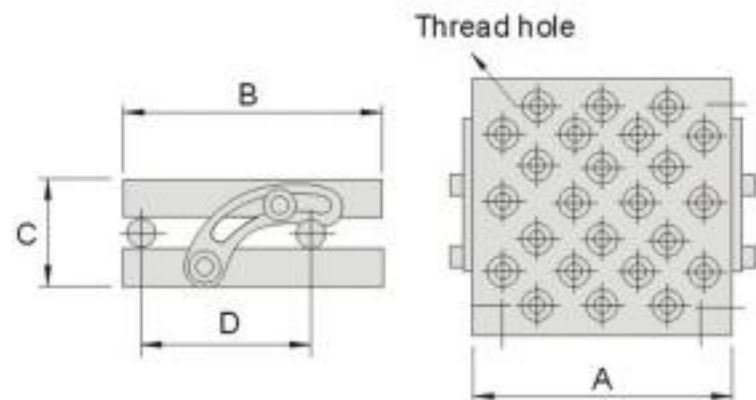
SP

Sine Plate



## Features :

- ▶ Tapped holes on top plates for fixing workpieces.
- ▶ Squareness within 0.005mm (0.0002")
- ▶ Parallelism within 0.005mm (0.0002") / 100mm
- ▶ Center distance of rolls within 0.005mm. (0.0002")
- ▶ Adjustable angle 0-60°.



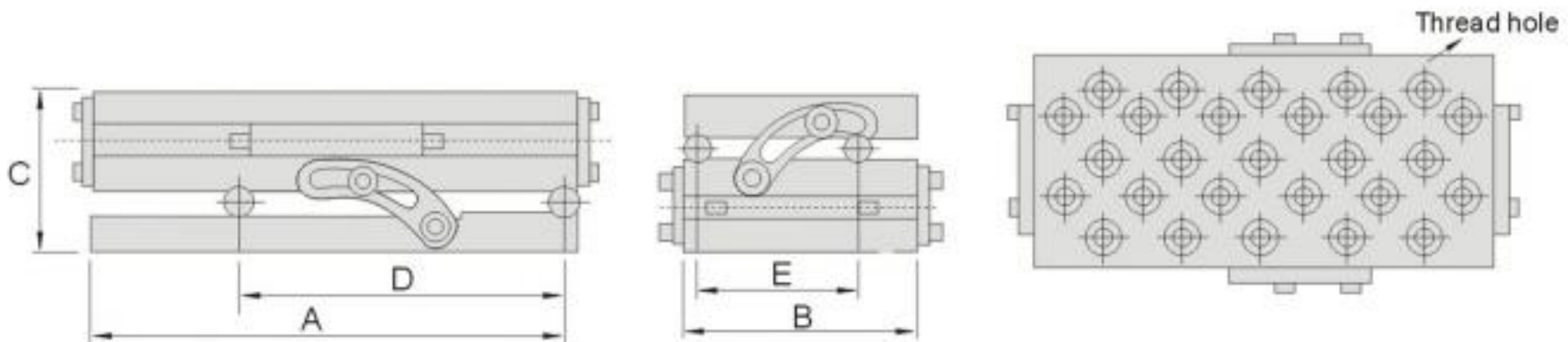
Metric  
Inch

Order No.	Model	A	B	C	D	Thread hole	N.W.
54090-10	SP47	175	100	60	75	M6x1.0	6.5kg
54090-15		7	4	2.362	3	1/4"-20UNC	
54090-20	SP66	150	150	60	100	M6x1.0	8.1kg
54090-25		6	6	2.362	5	1/4"-20UNC	
54090-30	SP612	300	150	60	100	M10x1.5	15.8kg
54090-35		12	6	2.362	5	3/8"-16UNC	



### Features :

- ▶ Widely applied on grinding or milling machines with compound angle adjustable.
- ▶ Made of quality steel, hardened to 55°~ 58°.
- ▶ Parallelism within 0.005mm(0.0002") / 100mm
- ▶ Center distance of rolls within 0.005mm (0.0002").
- ▶ Adjustable angle 0-60°.



Metric	Inch
--------	------

Order No.	Model	A	B	C	D	E	Thread hole	N.W.
54100-10	CSP47	175	100	100	100	75	M6x1.0	9.7kg
54100-15		7	4	4	5	3	1/4"-20UNC	
54100-20	CSP66	150	150	100	100	100	M6x1.0	12.2kg
54100-25		6	6	4	5	5	1/4"-20UNC	
54100-30	CSP612	300	150	100	200	100	M10x1.5	23.4kg
54100-35		12	6	4	10	5	3/8"-16UNC	

MAGNETIC TOOLS

# Sine Magnetic Chuck

**54110**

SPM

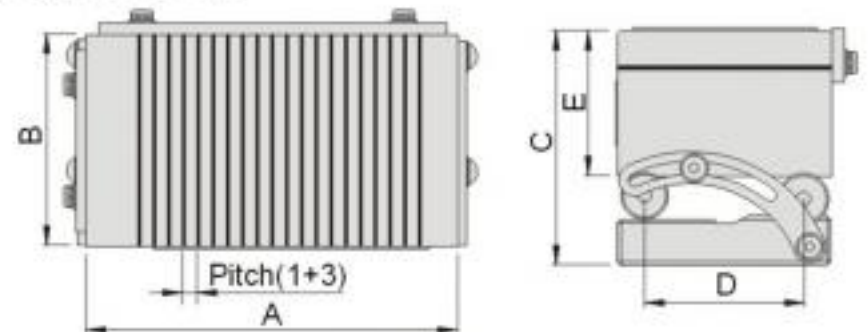
Economy Sine Magnetic Chuck



Metric  
Inch

## Features :

- ▶ This Sine Magnetic Chuck provides user-friendly and cost effective.
- ▶ Parallelism within 0.003mm / 100mm
- ▶ Center distance of rolls within 0.005mm.
- ▶ Adjustable angle 0-60° For sine angle calculation refer to 55070



Order No.	Model	A	B	C	D	E	N.W.						
54110-10	54110-15	SP47M	175	7	100	4	85.4	3.4	75	3	47	1.85	10.4kg
54110-20	54110-25	SP66M	150	6	150	6	85.4	3.4	100	5	47	1.85	12.6kg
54110-22	54110-27	SP510M	250	10	125	5	85.4	3.4	100	4	47	1.85	17.8kg
54110-30	54110-35	SP612M	300	12	150	6	85.4	3.4	100	5	47	1.85	25.4kg

**54120**

CSPM

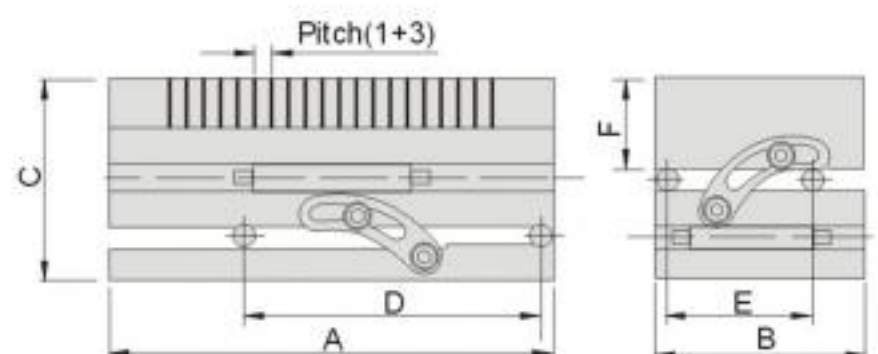
Compound Sine Magnetic Chuck



Metric  
Inch

## Features :

- ▶ Base is hardened with precision ground and high rigidity.
- ▶ Parallelism within 0.003mm / 100mm
- ▶ Center distance of rolls within 0.005mm.
- ▶ Adjustable angle 0-60° For sine angle calculation refer to 55070



Order No.	Model	A	B	C	D	E	F	N.W.							
54120-10	54120-15	CSP47M	175	7	100	4	123.7	4.9	100	5	75	3	47	1.85	13.5kg
54120-20	54120-25	CSP66M	150	6	150	6	123.7	4.9	100	5	100	5	47	1.85	16.8kg
54120-22	54120-27	CSP510M	250	10	125	5	123.7	4.9	200	8	100	4	47	1.85	23.4kg
54120-30	54120-35	CSP612M	300	12	150	6	123.7	4.9	200	10	100	5	47	1.85	32.5kg

# 54130

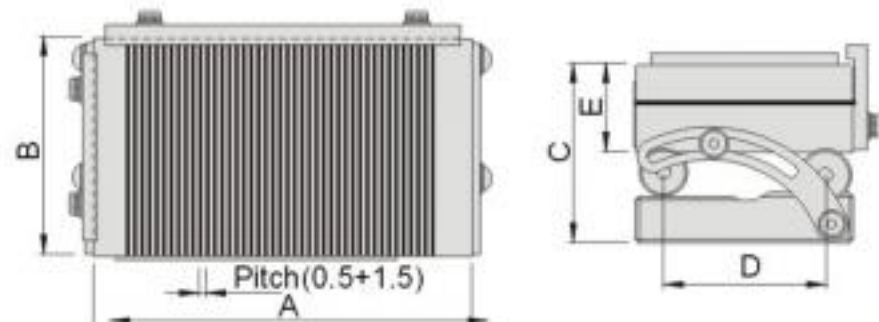
SPS

## Economy Sine Plate With Fine Magnetic Chuck



### Features :

- ▶ Suitable for thin and small workpiece processing.
- ▶ Parallelism within 0.003mm / 100mm
- ▶ Center distance of rolls within 0.005mm.
- ▶ Adjustable angle 0-60° For sine angle calculation refer to 55070



Metric  
Inch

Order No.	Model	A	B	C	D	E	N.W.						
54130-10	54130-15	SP47S	175	7	100	4	85.4	3.4	75	3	47	1.85	10.3kg
54130-20	54130-25	SP66S	150	6	150	6	85.4	3.4	100	5	47	1.85	12.7kg
54130-22	54130-27	SP510S	250	10	125	5	85.4	3.4	100	4	47	1.85	18.3kg
54130-30	54130-35	SP612S	300	12	150	6	85.4	3.4	100	5	47	1.85	26.7kg

# 54140

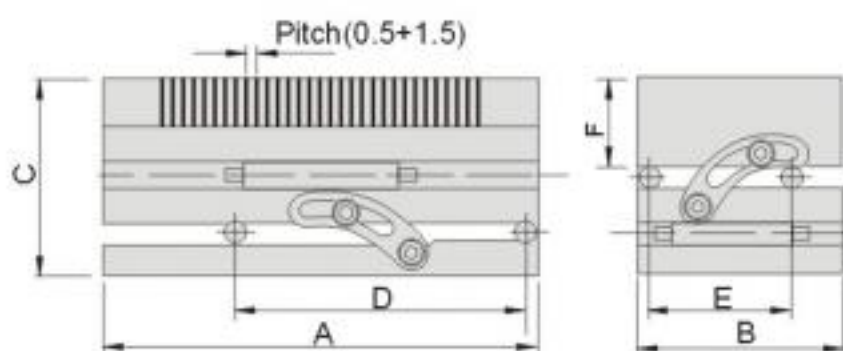
CSPS

## Compound Sine Plate With Fine Magnetic Chuck



### Features :

- ▶ Base is hardened with precision ground and high rigidity.
- ▶ Parallelism within 0.003mm / 100mm
- ▶ Center distance of rolls within 0.005mm.
- ▶ Adjustable angle 0-60° For sine angle calculation refer to 55070



Metric  
Inch

Order No.	Model	A	B	C	D	E	F	N.W.					
54140-10	54140-15	CSP47S	175	7	100	4	123.7	100	75	3	47	1.85	13.5kg
54140-20	54140-25	CSP66S	150	6	150	6	123.7	100	100	5	47	1.85	16.8kg
54140-22	54140-27	CSP510S	250	10	125	5	123.7	200	100	4	47	1.85	23.4kg
54140-30	54140-35	CSP612S	300	12	150	6	123.7	200	100	5	47	1.85	33.1kg

MAGNETIC TOOLS

# Sine Magnetic Chuck

**54150**

MSP

Sine Plate With Fine Magnetic Chuck

PAT: 191154  
ZL 99 2 11094.7

MSP66S

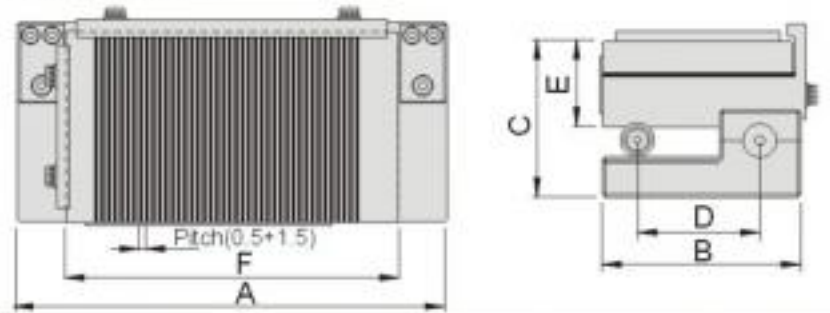
MSP612S



Metric  
Inch

## Features :

- ▶ This magnetic chuck is user-friendly and high precision auxiliary tools.
- ▶ Tiny workpiece can be attracted with pole pitch 1.5mm.
- ▶ Parallelism within 0.003mm / 100mm
- ▶ Center distance of rolls within 0.005mm.
- ▶ Adjustable angle 0-60° For sine angle calculation refer to 55070



Order No.	Model	A	B	C	D	E	F	N.W.
54150-10	MSP35S	174	78	74	50	40	130	6.5kg
54150-15	MSP35S	7	3	2.9	2	1.58	5	
54150-20	MSP47S	225	102	84	75	47	175	11kg
54150-25	MSP47S	9	4	3.3	3	1.85	7	
54150-30	MSP66S	200	152	84	100	47	150	14.8kg
54150-35	MSP66S	8	6	3.3	5	1.85	6	
54150-40	MSP510S	300	127	84	100	47	250	20kg
54150-45	MSP510S	12	5	3.3	4	1.85	10	
54150-50	MSP412S	350	102	84	75	47	300	20.3kg
54150-55	MSP412S	14	4	3.3	3	1.85	12	
54150-60	MSP612S	350	152	84	100	47	300	27.5kg
54150-65	MSP612S	14	6	3.3	5	1.85	12	

**54160**

CMSP

Compound Sine Plate With Fine Magnetic Chuck

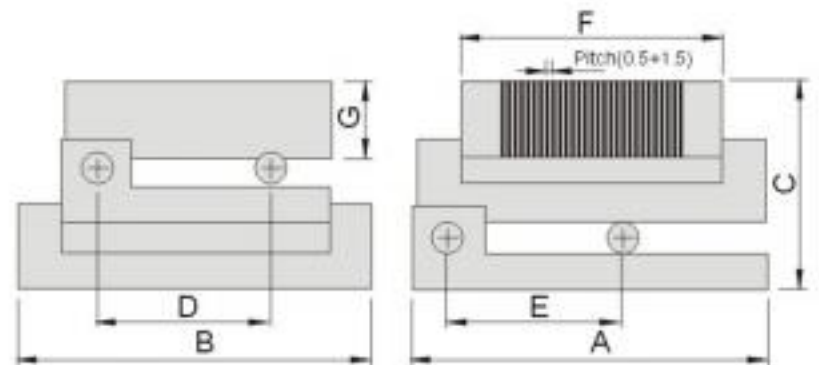


- ▶ Parallelism within 0.003mm / 100mm
- ▶ Center distance of rolls within 0.005mm.
- ▶ Adjustable angle 0-60° For sine angle calculation refer to 55070

Metric  
Inch

## Features :

- ▶ Base is hardened with precision ground and high rigidity.



Order No.	Model	A	B	C	D	E	F	G	N.W.
54160-10	CMSP35S	177	122	107.7	50	100	130	40	10kg
54160-15	CMSP35S	7	4.8	4.2	2	3	5	1.58	
54160-20	CMSP47S	225	150	121	75	150	175	47	16kg
54160-25	CMSP47S	9	6	4.8	3	5	7	1.85	
54160-30	CMSP66S	200	200	121	100	150	150	47	20.9kg
54160-35	CMSP66S	8	8	4.8	5	5	6	1.85	
54160-40	CMSP510S	300	175	121	100	200	250	47	28kg
54160-45	CMSP510S	12	7	4.8	4	10	10	1.85	

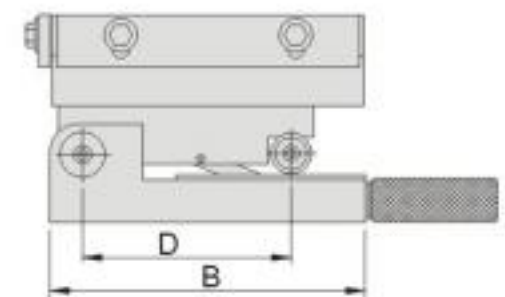
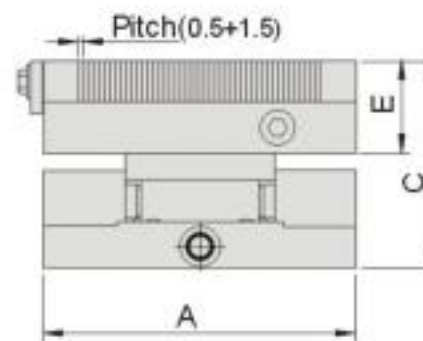
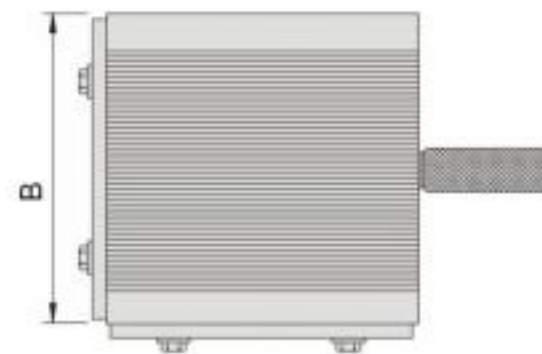
**54170**
**MSPSA**
**Fine-tuning Sine Magnetic Chuck**
**MSP35SA**

**MSP47SA**

**MSP66SA**


### Features :

- ▶ This magnetic chuck has fine-tuning function with high accuracy and high stability.
- ▶ Tiny workpiece can be attracted with pole pitch 1.5mm.
- ▶ Parallelism within 0.003mm / 100mm
- ▶ Adjustable angle 0-55° For sine angle calculation refer to 55070.



Unit:mm

Order No.	Model	A	B	C	D	E	N.W.
54170-35	MSP35SA	130	75	83	50	37	5.6kg
54170-47	MSP47SA	175	100	90	75	41	10.5kg
54170-66	MSP66SA	150	150	89	100	39	13.1kg

# Magnetic Chuck

**54180**

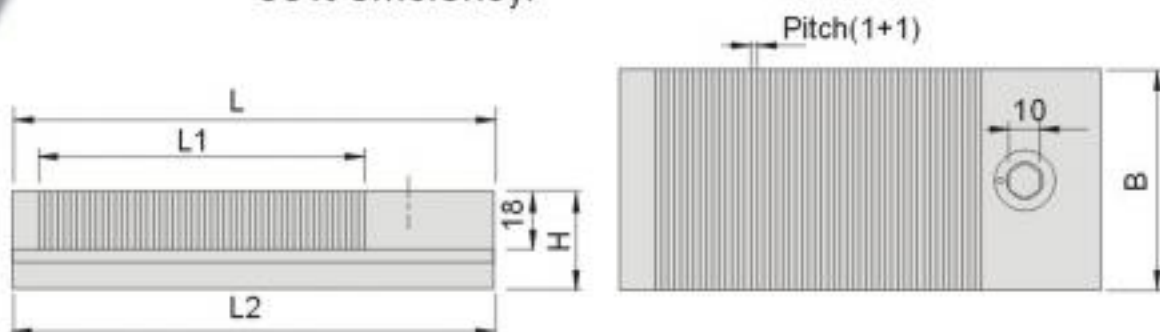
MTW

Super Thin Type Permanent Magnetic Chuck



## Features :

- ▶ Suitable for grinding, EDM and projection grinding machine.
- ▶ Thin & light in terms of dimensions.
- ▶ Water resistance.
- ▶ Apply by turns when mass production, increasing 50% efficiency.



Order No.	Model	Spec.	B	L	L1	Pitch	L2	H	N.W.
54180-305	MTW305	70X130	70	130	77	2(1+1)	130	30	2.2kg
54180-307	MTW307	70X175		175	122		175		2.9kg
54180-408	MTW408	100X200	100	200	147		220		5.7kg
54180-606	MTW606	150X150	150	150	97		150	36	6.4kg
54180-608	MTW608	150X200		200	147		220		8.5kg
54180-610	MTW610	150X250		250	197		270		10.6kg

Unit:mm

**54190**

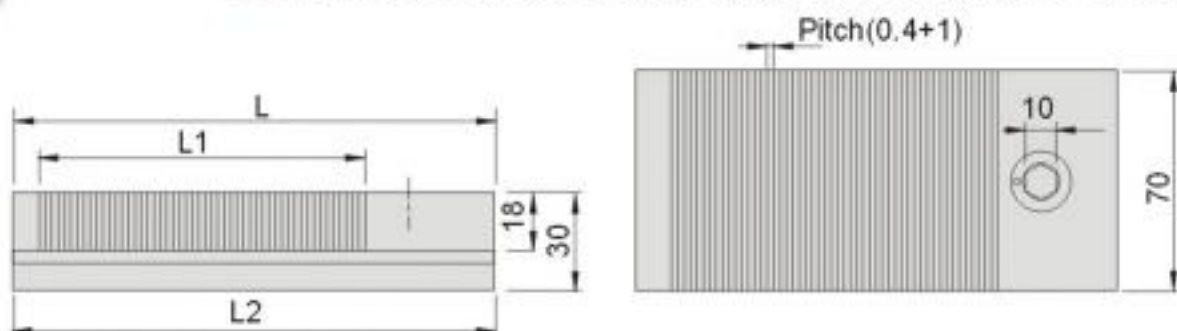
MTS

Super Thin Permanent Magnetic Chuck (stainless steel)



## Features :

- ▶ Suitable for grinding, EDM and projection grinding machine.
- ▶ Thin & light in terms of dimensions.
- ▶ Water resistance.
- ▶ Apply by turns when mass production, increasing 50% efficiency.
- ▶ Stainless steel pole pitch. Made of stainless steel.



Order No.	Model	Spec.	L	L1	Pitch	L2	N.W.
54190-305	MTS305	70X130	130	77	1.4(0.4+1)	130	2.2kg
54190-307	MTS307	70X175	175	122		175	2.9kg

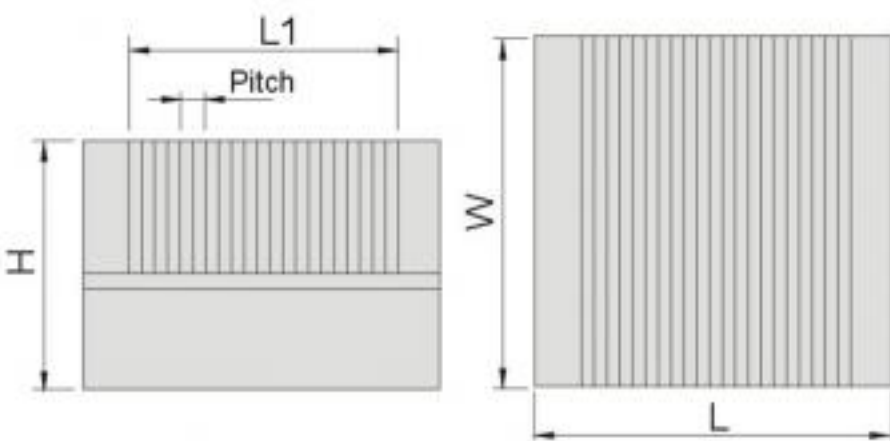
Unit:mm

**54200 HMR Permanent Magnetic Chuck(For Alloy Material)**



**Features :**

- ▶ Suitable for alloy and other metal materials which are difficult to hold.
- ▶ The top plate is brazing to ensure stability and accuracy.
- ▶ Magnetic force is up to 3500 gauss.
- ▶ Stainless steel made plate, high rigidity and durability.
- ▶ No ON-OFF switch.



Unit:mm

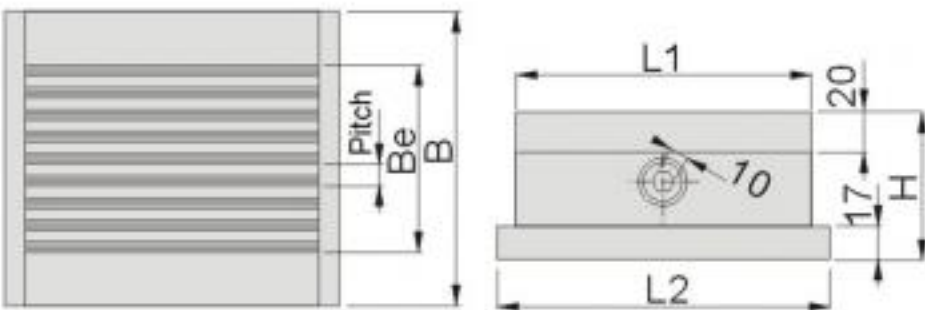
Order No.	Model	Spec.	W	L	L1	Pitch	H	N.W.
54200-02	HMR-404	105X105	105	105	69	6 (1+1+ 1+3)	60	5.2kg
54200-04	HMR-407	105X180		180	145			9.0kg
54200-08	HMR-612	150X300	150	300	266			21.0kg

**54210 HMTR Permanent Magnetic Chuck(For Carbide Material)**



**Features :**

- ▶ Suitable for Tungsten and other metal materials which are difficult to hold.
- ▶ The top plate is brazing to ensure stability and accuracy.
- ▶ Magnetic force is up to 3000 gauss.
- ▶ On/Off switch design, turn 360°



Unit:mm

Order No.	Model	Spec.	B	Be	Pitch	L1	L2	H	N.W.
54210-02	HMTR-1010L	100X100	100	50.0	11.2 (1.6+2+ 1.6+6)	100	125	94	7.8kg
54210-04	HMTR-1313L	125X125	125	72.4		125	145	80	11kg
54210-06	HMTR-1320L	125X200	125	72.4		200	220	80	16.3kg
54210-08	HMTR-1515L	150X150	150	94.8		150	170	80	13.9kg
54210-10	HMTR-1520L	150X200	150	94.8		200	220	80	18.2kg

MAGNETIC TOOLS

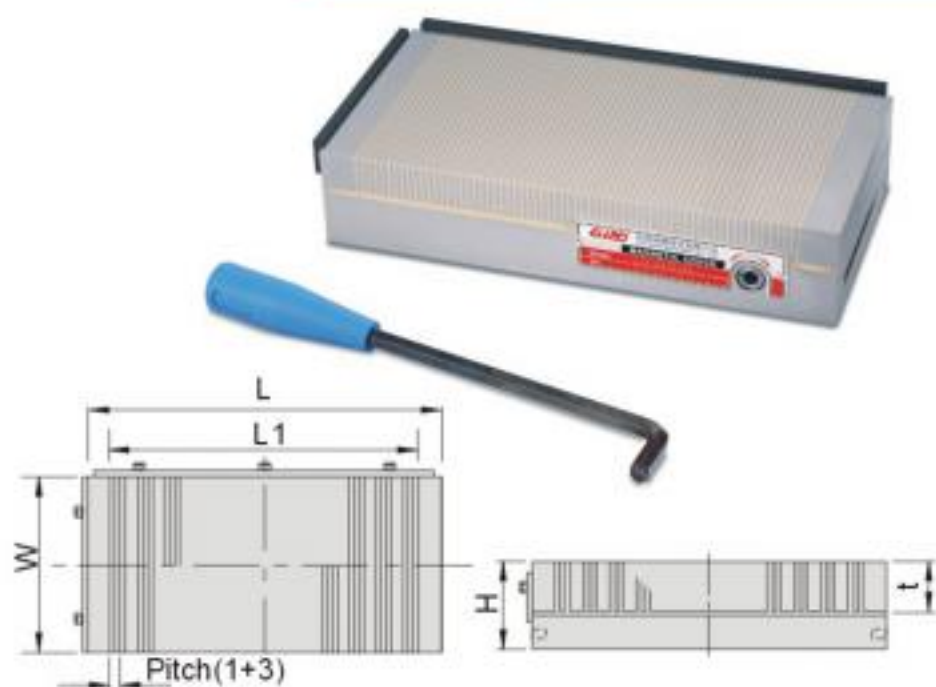


# Magnetic Chuck

**54220**

**B**

**Fine Pitch Permanent Magnetic Chuck**



## Features :

- ▶ Suitable for surface grinding and EDM machines.
- ▶ Suitable for holding big and thick workpieces.
- ▶ Overall sealed water resistance.
- ▶ High precision with strong magnetic force up to 14 kgf/cm<sup>2</sup>.
- ▶ Thicker top plate is applied, extended lifecycle.
- ▶ Parallelism, flatness and squareness within 0.005mm/100mm.

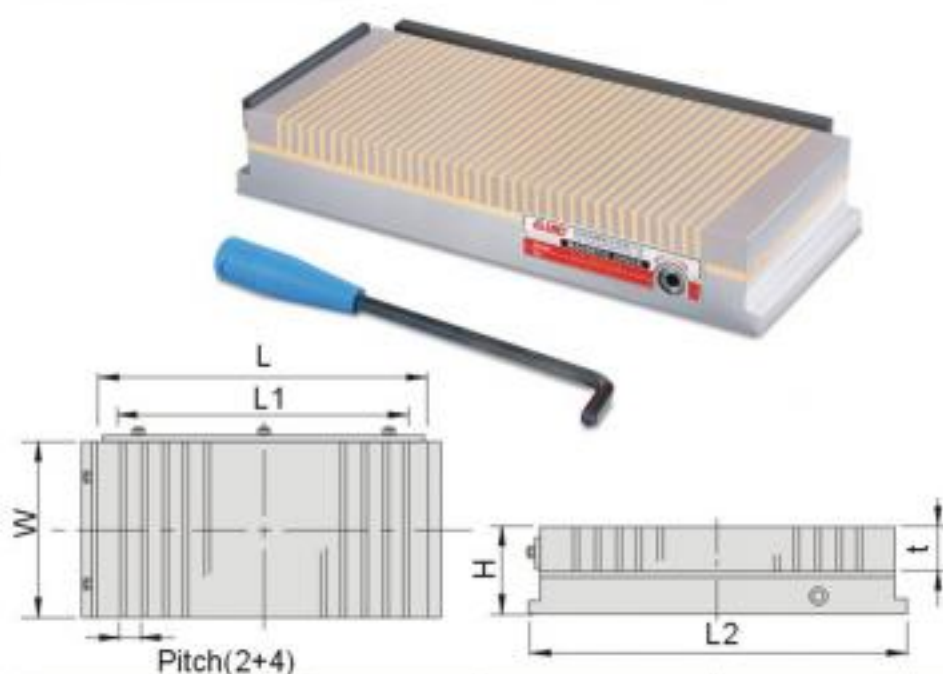
Unit:mm

Order No.	Model	Spec.	W	L	L1	t	Pitch	H	N.W.
54220-02	407B	100X175	100	175	139	20	1+3	52	8kg
54220-04	510B	125X250	125	250	212				14kg
54220-06	612B	150X300	150	300	256			60	21.9kg
54220-08	614B	150X350	150	350	306				25.6kg
54220-09	616B	150X400	150	400	356				30.5kg
54220-10	618B	150X450	150	450	400				33.8kg
54220-12	816B	200X400	200	400	356				38.3kg
54220-14	818B	200X450	200	450	400				42.8kg
54220-16	820B	200X500	200	500	450				50.0kg

**54230**

**E**

**Normal Pitch Permanent Magnetic Chuck**



## Features :

- ▶ Suitable for surface grinding and EDM machines.
- ▶ Suitable for holding big and thick workpieces.
- ▶ Overall sealed water resistance.
- ▶ High precision with strong magnetic force up to 14 kgf/cm<sup>2</sup>.
- ▶ Thicker top plate is applied, extended lifecycle.
- ▶ Parallelism, flatness and squareness within 0.005mm/100mm.

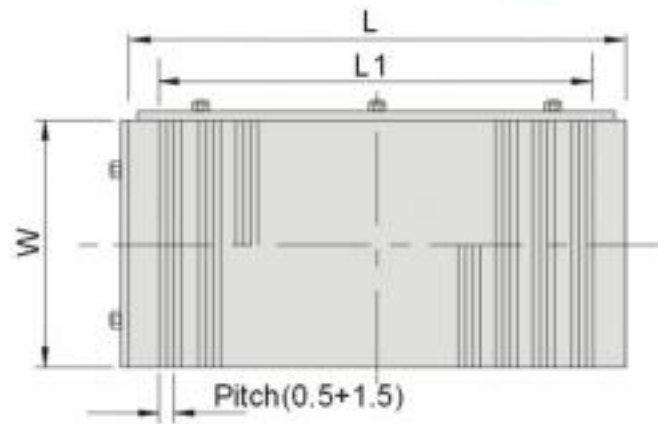
Unit:mm

Order No.	Model	Spec.	W	L	L1	t	Pitch	L2	H	N.W.
54230-02	407E	100X175	100	175	139	20	2+4	191	50	7.00kg
54230-04	510E	125X250	125	250	212			266		13.9kg
54230-06	612E	150X300	150	300	256			316		17.5kg
54230-08	614E	150X350	150	350	306			366		22.5kg
54230-09	616E	150X400	150	400	356			416		25.9kg
54230-10	618E	150X450	150	450	400			466		28.2kg
54230-12	816E	200X400	200	400	356			416		32.5kg
54230-14	818E	200X450	200	450	400			466		35.7kg
54230-16	820E	200X500	200	500	450			516		42.0kg

**54240**
**V**
**Micropitch Permanent Magnetic Chuck**


### Features :

- ▶ Suitable for surface grinding and EDM machines.
- ▶ Suitable for holding small and thin workpieces.
- ▶ Overall sealed water resistance.
- ▶ High precision with strong magnetic force up to 14 kgf/cm<sup>2</sup>.
- ▶ Thicker top plate is applied, extended lifecycle.
- ▶ Strong mag. force with high accuracy.



Unit:mm

Order No.	Model	Spec.	W	L	L1	t	Pitch	H	N.W.
54240-02	407V	100X175	100	175	139	20	0.5+1.5	52	7.5kg
54240-04	606V	150X150	150	150	114			52	9.7kg
54240-06	510V	125X250	125	250	212			52	13kg
54240-08	612V	150X300	150	300	256			60	21kg
54240-10	614V	150X350	150	350	306			60	25.8kg
54240-11	616V	150X400	150	400	356			60	32.6kg
54240-12	618V	150X450	150	450	400			60	32.2kg
54240-14	816V	200X400	200	400	356			60	39.0kg
54240-16	818V	200X450	200	450	400			60	40.5kg
54240-18	820V	200X500	200	500	450			60	47.7kg



MAGNETIC TOOLS

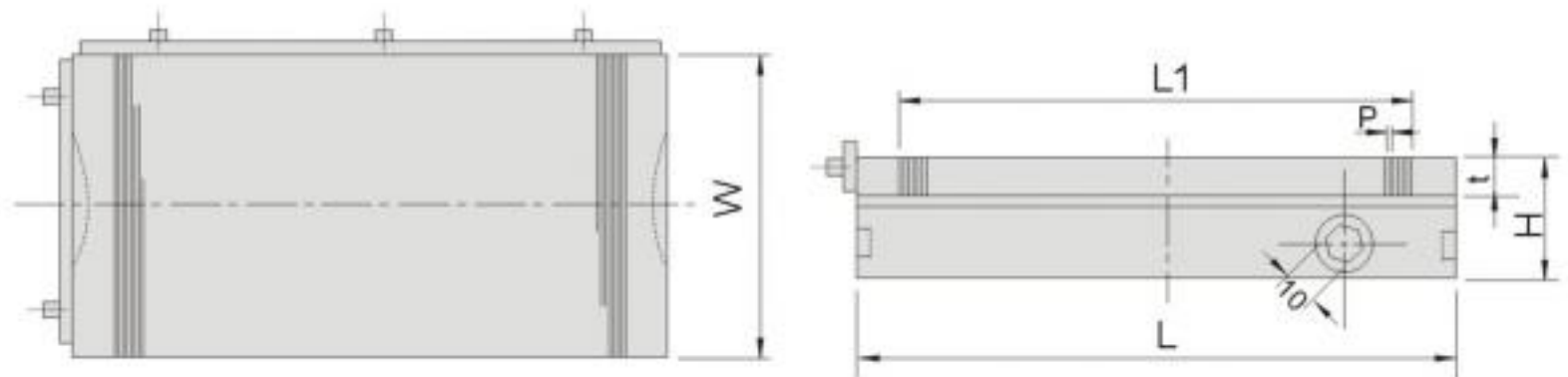
# Magnetic Chuck

## 54250 W Powerful Micropitch Permanent Magnetic Chuck



### Features :

- ▶ Suitable for surface grinding and EDM machines.
- ▶ Suitable for holding small and thin workpieces thanks its ideally designed pole pitch.
- ▶ While turning magnetic force ON/OFF, the flat face's accuracy remain the same and keep high precision processing surface.
- ▶ Copper welding protects faceplate from cutting fluid corrosion.
- ▶ Made of permanent magnet, with strong attraction and less residual magnetism.



Unit:mm

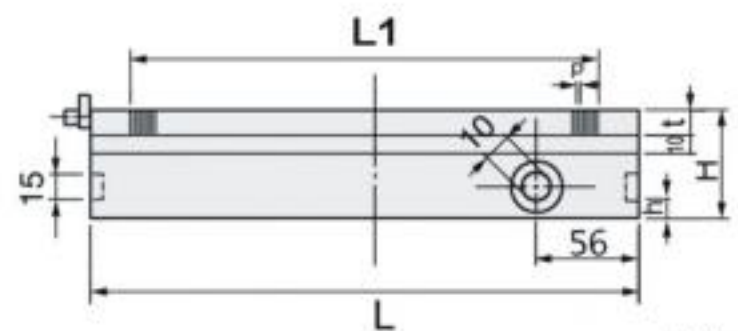
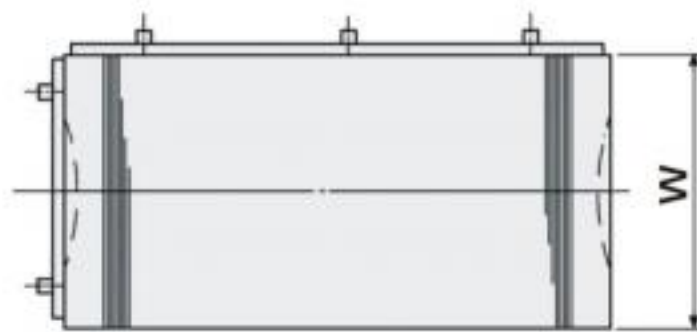
Order No.	Model	Spec.	W	L	L1	t	Pitch	H	N.W.
54250-02	407W	100X175	100	175	125	18	Copper 2 (1+1)	52	7.7kg
54250-04	606W	150X150	150	150	110				10.0kg
54250-06	510W	125X250	125	250	205				13.9kg
54250-08	612W	150X300	150	300	246			58	22.3kg
54250-10	614W	150X350		350	296				25.4kg
54250-12	618W	150X450		450	390				34.0kg
54250-14	816W	200X400	200	400	346				38.4kg
54250-16	818W	200X450		450	390				45.0kg
54250-18	820W	200X500		500	446				48.3kg

MAGNETIC TOOLS



### Features :

- ▶ Suitable for surface grinding and EDM machines.
- ▶ The fine-pitched magnetic poles make it ideally suitable for small and thin workpieces, specially designed for high precision operation.
- ▶ Brazing treatment protects the top plate from coolant corrosion.
- ▶ Strong holding power, residual magnetism reduced.
- ▶ Stainless steel pole pitch adopted for the top plate.
- ▶ Excellent water resistant, enables to be used in liquid.
- ▶ ON/OFF switching doesn't influence plate flatness accuracy.



Unit:mm

Order No.	Model	Spec.	W	L	L1	t	Pitch	H	N.W.
54260-01	305VW	75x130	75	130	85	18	stainless steel 1.4 (0.4+1)	58	4.0kg
54260-02	307VW	75x175		175	125				5.5kg
54260-03	312VW	75x300		300	246			9.0kg	
54260-04	407VW	100x175	100	175	125			52	7.0kg
54260-05	510VW	125x250	125	250	205				12.0kg
54260-06	606VW	150X150	150	150	110				9.0kg
54260-07	612VW	150x300		300	246			20.0kg	
54260-08	614VW	150x350		350	296			24.0kg	
54260-09	616VW	150x400		400	346			27.5kg	
54260-10	618VW	150x450		450	390			31.0kg	
54260-11	816VW	200x400		200	400			346	37.0kg
54260-12	818VW	200x450	450		390			41.5kg	



# Magnetic Chuck

**54300**

**U**

**Rotary Permanent Magnetic Chuck**

**54310**

**UW**

**Rotary Micropitch Permanent Magnetic Chuck**

**U**

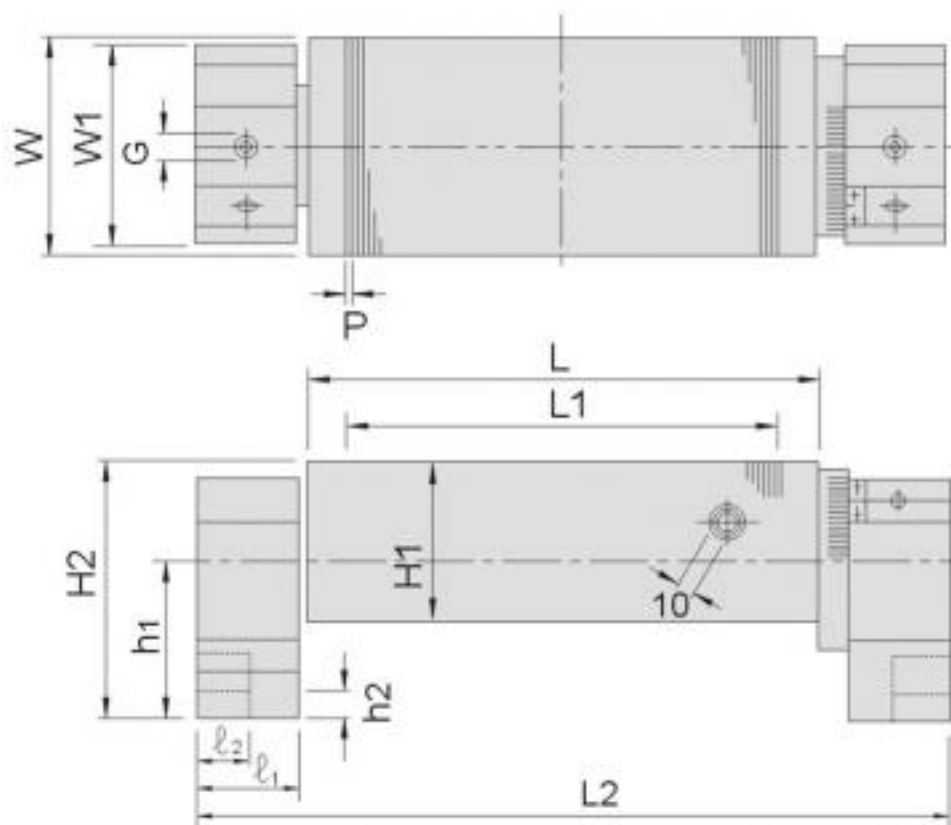


**UW**



## Features :

- ▶ Suitable for angle grinding on surface grinding machine.
- ▶ Graduation can be read on rotary shaft and makes easier to angular grinding.
- ▶ Main body integrated with rotary shaft.
- ▶ Accuracy remained during ON/OFF changeover.
- ▶ Pole pitch are different in each model, thin, thick, small , large workpiece will be applied accordingly.

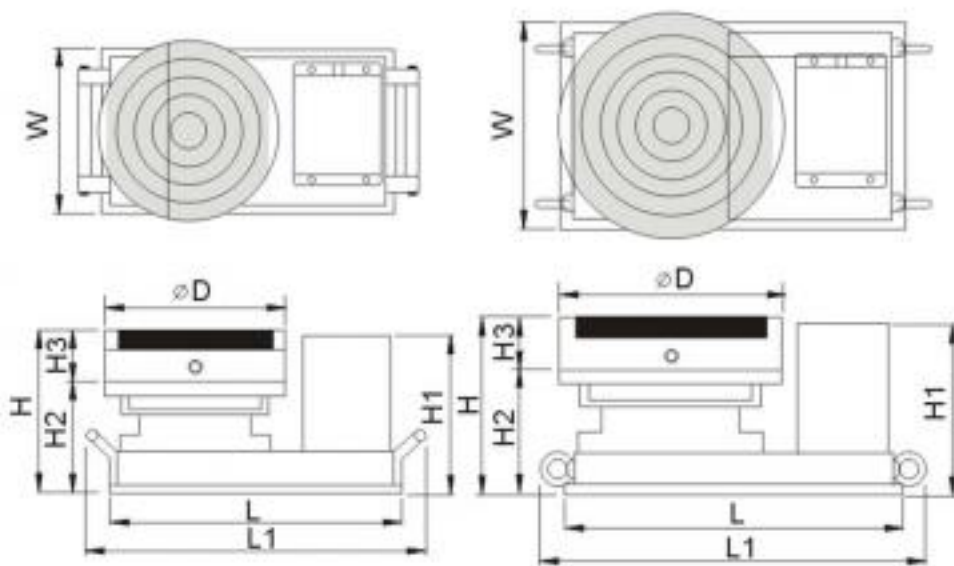


Unit:mm

Order No.	Model	Spec.	W	L	L1	H1	Pitch	L2	W1	l1	l2	G	h1	h2	H2	N.W.
54300-07	407U	100X175	100	175	125	78	11.2 (1.6+2+1.6+6)	293	100	50	25	14	103	15	145	19kg
54300-10	510U	125X250	125	250	200			368								29.5kg
54300-12	612U	150X300	150	300	246			418								38.0kg
54300-14	614U	150X350	150	350	296			468								42.0kg
54300-18	618U	150X450	150	450	396			568								52.0kg

Unit:mm

Order No.	Model	Spec.	W	L	L1	H1	Pitch	L2	W1	l1	l2	G	h1	h2	H2	N.W.
54310-07	407UW	100X175	100	175	125	78	2 (1+1)	293	100	50	25	14	103	15	145	21.0kg
54310-10	510UW	125X250	125	250	200			368								30.0kg
54310-12	612UW	150X300	150	300	246			418								38.5kg
54310-14	614UW	150X350	150	350	296			468								42.5kg
54310-18	618UW	150X450	150	450	396			568								52.5kg

**54320**
**RD**
**Precision Adjustment Rotary Magnetic Chuck**


### Features :

- ▶ Suitable for surface grinders, easy to install and disassemble.
- ▶ Rotary grinding is suitable for machining spindle spacer rings, circular workpieces or gaskets.
- ▶ Rotary grinding can achieve high efficiency and increase cost effectiveness than traditional method.
- ▶ According to the size of the workpiece, the rotation speed can be changed even while operating.
- ▶ High grinding accuracy within 0.001mm / 100mm
- ▶ Adopting high quality bearings in structure to ensure precision spindle and durability.
- ▶ Adopting speed control motor of Oriental Motor, precise, smooth and durable.
- ▶ IP55 water resistance, prevent from damp and increase lifecycle.
- ▶ 90W ~ 400W speed control motor.
- ▶ Magnetic Chuck surface flatness within 0.002mm.
- ▶ Rotary loading speed variation rate is within  $\pm 2\%$
- ▶ Voltage: 110v / 220v 50/60Hz

Unit:mm

Order No.	Model	L	L1	W	H	H1	H2	H3	D	Volts IPH	Motor Ratio	R.P.M /min	Mass Kg/cm	Load	N.W.
54320-02	RD130-110	265	328	130	166	148	114	52	130	110V	60W 1:10	50-300	2.8	10kg	23kg
54320-04	RD130-220	265	328	130	166	148	114	52	130	220V	60W 1:10	50-300	3.0	12kg	23kg
54320-06	RD160-110	280	330	138	163	146	100	63	160	110V	75W 1:15	15-150	10	15kg	28kg
54320-08	RD160-220	280	330	138	163	146	100	63	160	220V	75W 1:15	15-150	10	15kg	28kg
54320-10	RD200-110	325	380	176	180	177	122	63	200	110V	75W 1:20	15-150	18	22kg	48kg
54320-12	RD200-220	325	380	176	180	177	122	63	200	220V	75W 1:20	15-150	18	22kg	48kg
54320-14	RD250-220	376	442	218	190	183	132	63	250	220V	120W 1:20	15-150	24	30kg	66kg
54320-16	RD300-220	424	490	244	202	186	144	63	300	220V	200W 1:25	12-125	112	36kg	86kg
54320-18	RD400-220	540	606	342	228	220	165	63	400	220V	400W 1:25	12-125	160	50kg	155kg

# Magnetic Chuck

**54330**

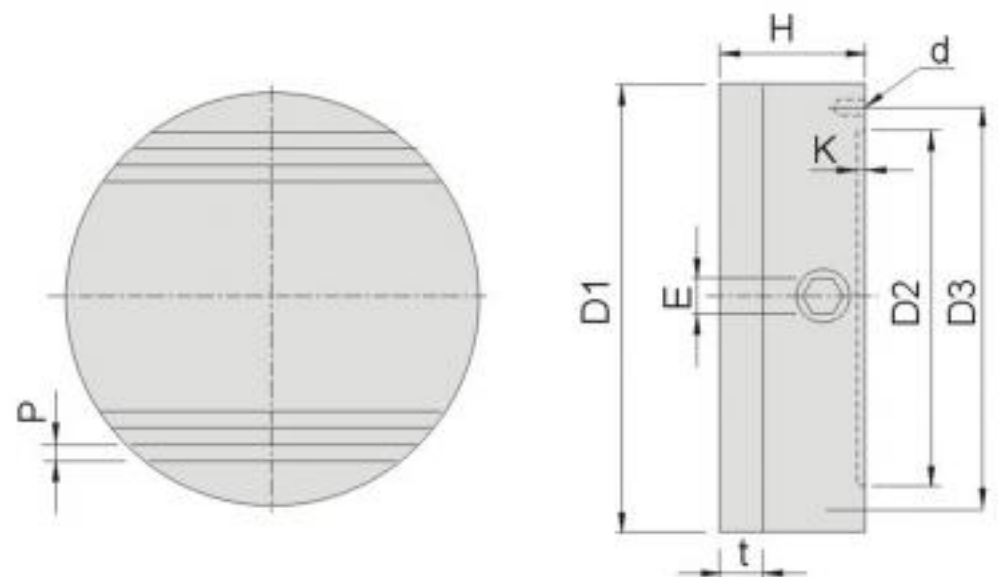
FCD

Round Fine Pitch Permanent Magnetic Chuck



## Features :

- ▶ Suitable for surface grinding machine.
- ▶ Suitable for holding Small workpieces.
- ▶ Overall sealed water resistance.
- ▶ High precision with strong magnetic force up to 13 kgf/cm<sup>2</sup>.



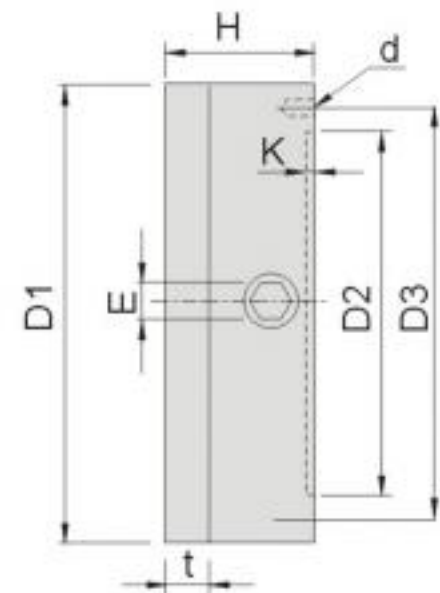
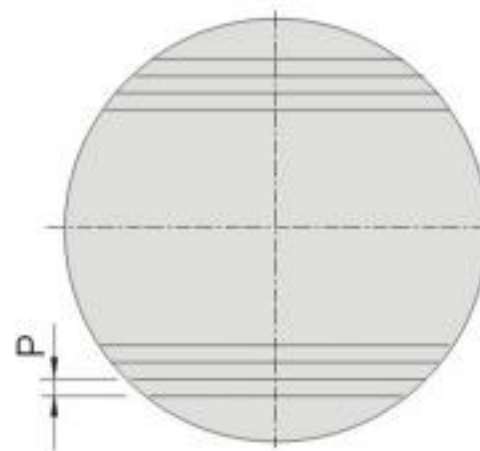
Unit:mm

Order No.	Model	D1	t	Pitch	D2	D3	K	d	E	H	N.W.
54330-100	FCD100	100	10	4 (1+3)	60	85	4	4-M6	8	52	3.15kg
54330-130	FCD130	130			90	115	4	4-M8			4.9kg
54330-150	FCD150	150			110	132	4				6.7kg
54330-160	FCD160	160			120	140	4				7.7kg
54330-200	FCD200	200			160	180	5				4-M10
54330-250	FCD250	250			200	225	5	19.5kg			
54330-300	FCD300	300			230	280	5	28.5kg			
54330-350	FCD350	350			230	311	5	39kg			
54330-405	FCD405	405			230	380	5	52kg			

**54340**
**MCD**
**Round Micro Pitch Permanent Magnetic Chuck**


### Features :

- ▶ Suitable for surface grinding machine.
- ▶ Suitable for holding Small workpieces.
- ▶ Overall sealed water resistance.
- ▶ High precision with strong magnetic force up to 13 kgf/cm<sup>2</sup>.



Unit:mm

Order No.	Model	D1	t	Pitch	D2	D3	K	d	E	H	N.W.
54340-100	MCD100	100	10	0.5+1.5	60	85	4	4-M6	8	52	3.1kg
54340-130	MCD130	130			90	115	4	4-M8			4.7kg
54340-150	MCD150	150			110	132	4				6.7kg
54340-160	MCD160	160			120	140	4				7.6kg
54340-200	MCD200	200			160	180	5				4-M10
54340-250	MCD250	250			200	225	5	17.8kg			
54340-300	MCD300	300			230	280	5	29.0kg			
54340-350	MCD350	350			230	311	5	39.0kg			
54340-405	MCD405	405			230	380	5	52.0kg			



# Magnetic Chuck

**54350**

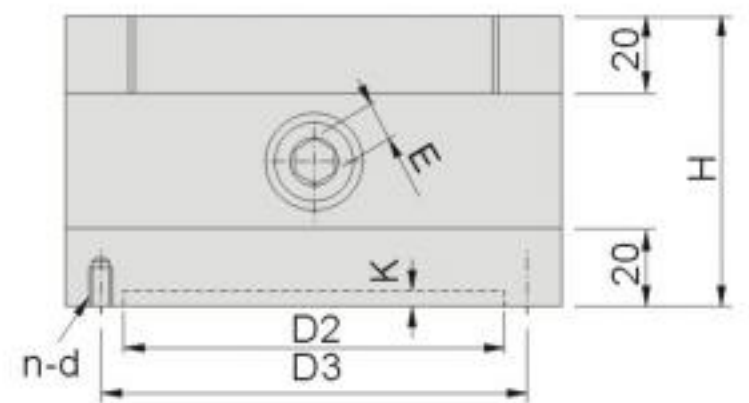
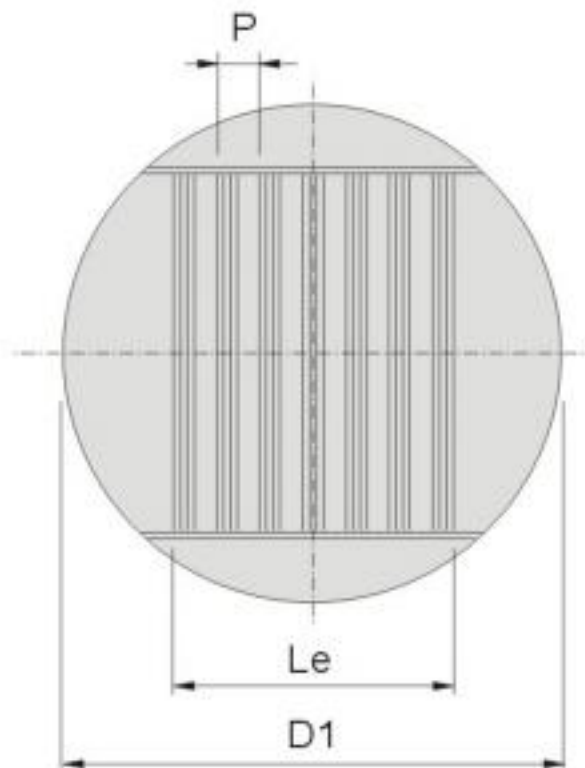
HMTR

Powerful Circular Type Permanent Magnetic Chuck



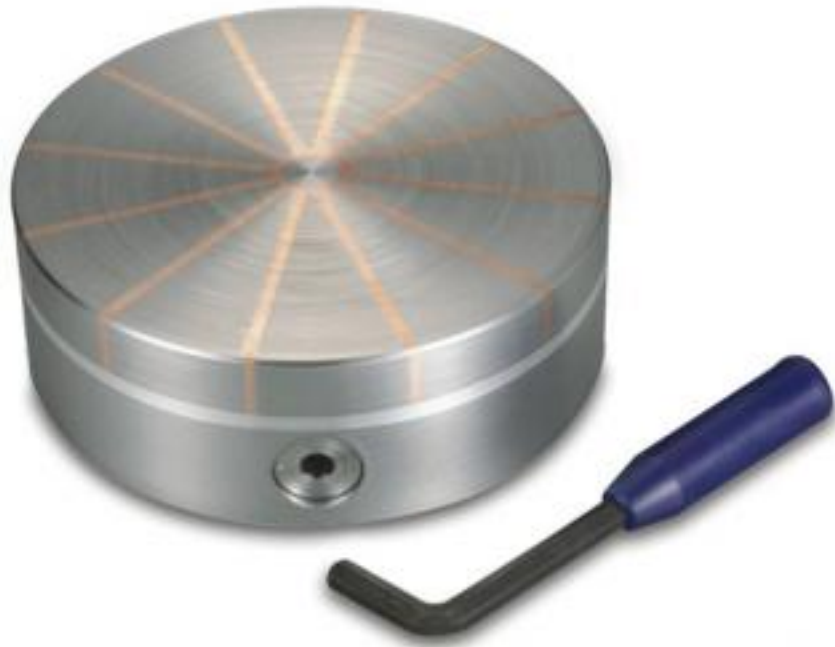
## Features :

- ▶ Suitable for Lathe, 4<sup>th</sup> axis CNC and cylindrical grinder.
- ▶ Suitable for holding workpieces of special alloy material such as Tungsten.
- ▶ Special design with ON/OFF structure, superb performance.
- ▶ High precision with strong magnetic force up to 3 times than general magnetic chuck.
- ▶ Wrench apply 360° rotary.



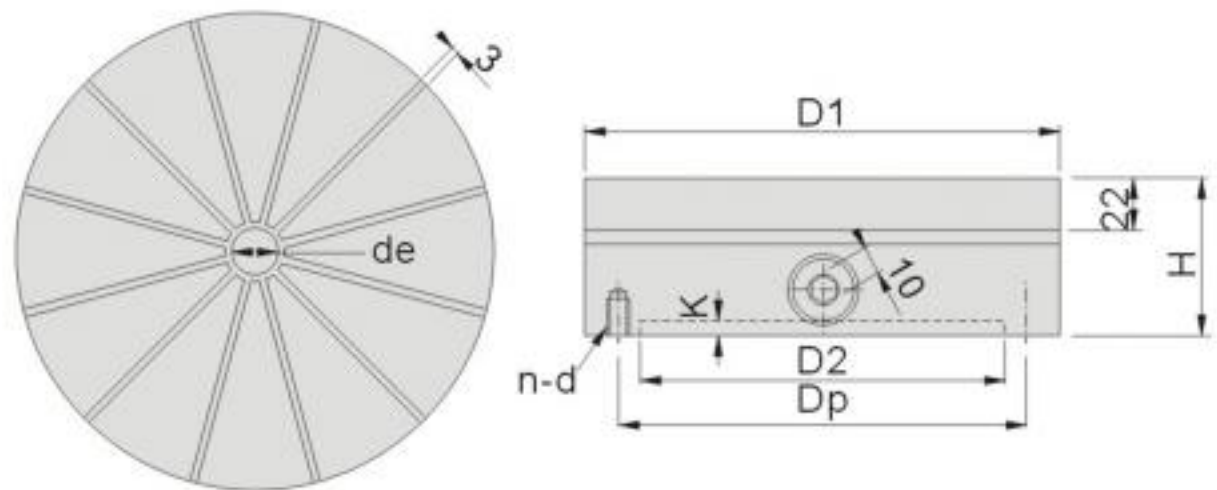
Unit:mm

Order No.	Model	D1	Le	Pitch	D2	D3	K	n-d	E	H	N.W.
54350-13	HMTR-13	130	78	11.2 (1.6+2+ 1.6+6)	100	112	4	4xM6	10	80	6.5kg
54350-16	HMTR-16	160	100		125	140	4	4xM8			9.8kg
54350-20	HMTR-20	200	128		160	180	4	4xM8			15kg

**54360**
**HRCS**
**Round Star-pole Type Permanent Magnetic Chuck**


### Features :

- ▶ Suitable for Lathe, Milling, Rotary grinding machines...tc.
- ▶ Powerful and well spread magnetic force, stable and no distortion.
- ▶ Durable and wear-resistance design with great water resistance.



Unit:mm

Order No.	Model	D1	de	Pole q'ty	D2	K	n	d	Dp	H	N.W.
54360-02	HRCS-10	104	16	8	63	4	M6	4	80	65	4.2kg
54360-04	HRCS-13	130		12	80		112		M8		10.2kg
54360-06	HRCS-16	162		160	140		17.1kg				
54360-08	HRCS-20	202	19	16	200		M10		26.2kg		
54360-10	HRCS-25	250		24	250				280	43.2kg	
54360-12	HRCS-32	320		30	280				320	55.0kg	
54360-14	HRCS-36	360	40	30	280		M12		80	320	55.0kg
54360-16	HRCS-40	400	46	36	315					355	67.0kg

# Magnetic Chuck

**54500**

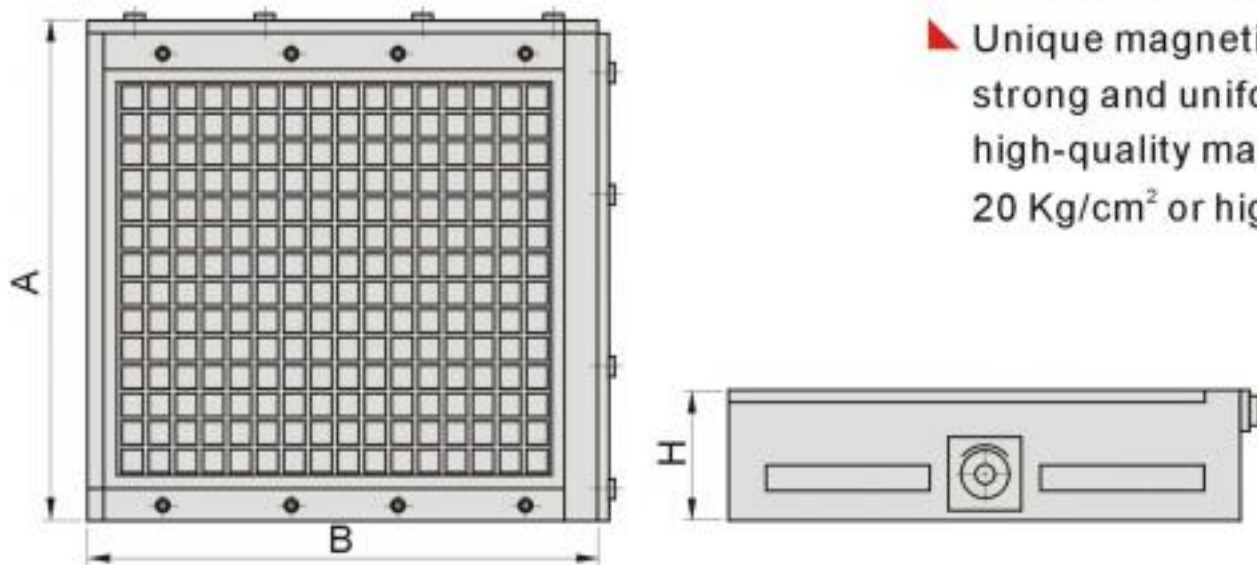
PMCA

Powerful Permanent Magnetic Chuck (GRID)



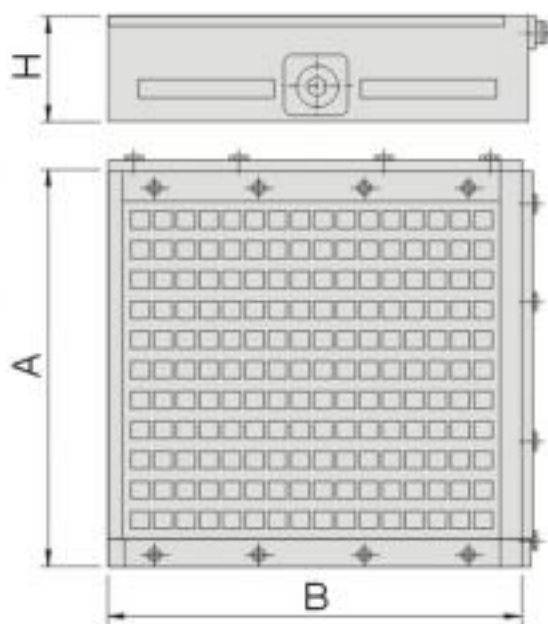
## Features :

- ▶ Suitable for CNC machining center, no need power plug-in and no overheated problem when using for a long time.
- ▶ High accuracy for the PMCA chuck which keeps 0.005/100mm and thus ensure the processing result for the workpiece.
- ▶ Unique magnetic circuit design for exceptionally strong and uniform suction, High-performance high-quality magnetic steel suction can reach 20 Kg/cm<sup>2</sup> or higher.



單位:mm

Order No.	Model	A	B	H	Square Pole Size	Pole qty.	Mag.Force (KN)	N.W.
54500-01	PMCA1530	150	300	60	12x12	120	>12	27kg
54500-02	PMCA2030	200	300	60		165	>18	36kg
54500-03	PMCA2040	200	400	72	18x18	120	>22	30kg
54500-05	PMCA3030	300	300	90		132	>25.6	52kg
54500-06	PMCA3030S	300	300	72		132	>25.6	40kg
54500-07	PMCA3040	300	400	90		180	>35	67kg
54500-08	PMCA3040S	300	400	72		180	>35	45kg
54500-09	PMCA4040	400	400	90		240	>46.6	85kg
54500-10	PMCA4050	400	500	90		300	>58.2	100kg
54500-11	PMCA4060	400	600	90		360	>69.8	120kg
54500-12	PMCA4070	400	700	77		464	>82.4	130kg
54500-13	PMCA4080	400	800	110		480	>93	171kg
54500-14	PMCA5060	500	600	90	456	>83.8	155kg	
54500-15	PMCA5070	500	700	77	580	>99.7	160kg	
54500-16	PMCA5080	500	800	77	660	>115.7	200kg	



### Features :

- ▶ Fulfill the high precision and efficiency required by machining center, CNC milling machines
- ▶ With superb loading efficiency which saves almost 80% time, and stable magnetic force can even hold workpiece which larger than itself and realise 5 sides processing
- ▶ Square poles combination with density and powerful force, high precision workpieces can be achieved while inner stress during processing.
- ▶ Powerful attraction can hold least thickness 2mm above for processing.
- ▶ Environmental safe and simple operation.

Unit:mm

Order No.	Model	A	B	H	Square Pole Size	Pole qty.	Mag.Force (KN)	N.W.
54540-02	PMC-2040	200	400	72	18x18	120	>25	56kg
54540-04	PMC-3040	300	420	72		180	>35	65kg
54540-06	PMC-3030	300	300	92		132	>25.6	50kg
54540-08	PMC-4040	400	400	92		240	>46.6	84kg
54540-10	PMC-4050	400	500	92		300	>58.2	100kg
54540-12	PMC-3060	300	600	92		264	>55	94kg
54540-14	PMC-3040A	300	400	92		176	>34.1	65kg
54540-16	PMC-5050	500	500	92		400	>77.6	125kg
54540-18	PMC-4060	400	600	92		360	>69.8	118kg
54540-20	PMC-4080	400	800	112		480	>93	161kg
54540-22	PMC-50100	500	1000	112		800	> 155.2	260kg

# Magnetic Chuck

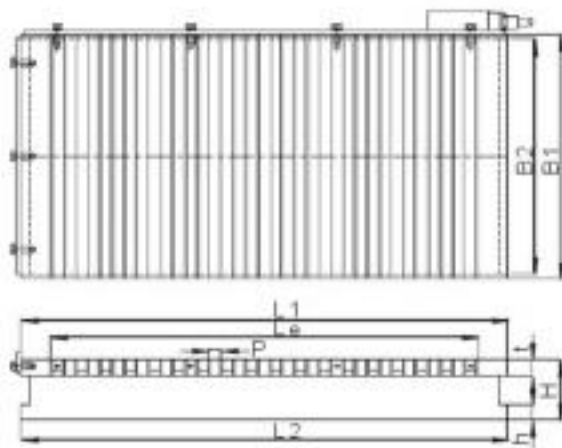
**54550**

**EPM-B**

**Standard Type Electro-Permanent Magnetic Chuck**



LxWxH:330x300x120mm



## Features :

- ▶ Suitable for light and long period processing. 1.5 seconds for switch ON and OFF, increase efficiency.
- ▶ Magnetic density up to 1300 gauss with light weight design which greatly reduce mechanical wear.
- ▶ No electricity capacity, power off after attraction can still remain attraction, eco and no heat generated. Distortion free and lead high precision and long lifecycle.
- ▶ Brazing top plate with excellent water resistant & high insulation resistance.
- ▶ Effective for thin and small workpieces applied

Unit:mm

Order No.	Model	Spec.	B1	L1	Le	t	Pitch	B2	L2	h	H	N.W.	
54550-02	EPM-1530B	150X300	150	300	258	20	15(3+12)	146	300	75		20kg	
54550-04	EPM-1535B	150X350		350	288				350			24kg	
54550-06	EPM-1540B	150X400		400	348				400			28kg	
54550-08	EPM-1545B	150X450		450	408				450			30kg	
54550-10	EPM-2040B	200X400	200	400	348	20	15(3+12)	196	400	20	75	38kg	
54550-12	EPM-2045B	200X450		450	408				450			41kg	
54550-14	EPM-2050B	200X500		500	438				500			45kg	
54550-16	EPM-2550B	250X500	250	500	438	25	19(3+16)	240	500	20	95	65kg	
54550-18	EPM-3060B	300X600	300	600	528			290				600	81kg
54550-20	EPM-4080B	400X800	400	800	744			390				800	195kg
54550-22	EPM-40100B	400X1000		1000	934	1000	245kg						
54550-24	EPM-50100B	500X1000	500	1000	934	25	19(3+16)	490	1500	20	95	305kg	
54550-26	EPM-50150B	500X1500		1500	1428							1500	457kg
54550-28	EPM-60100B	600X1000		600	1000							934	590
54550-30	EPM-60150B	600X1500	1500		1428	1500	550kg						

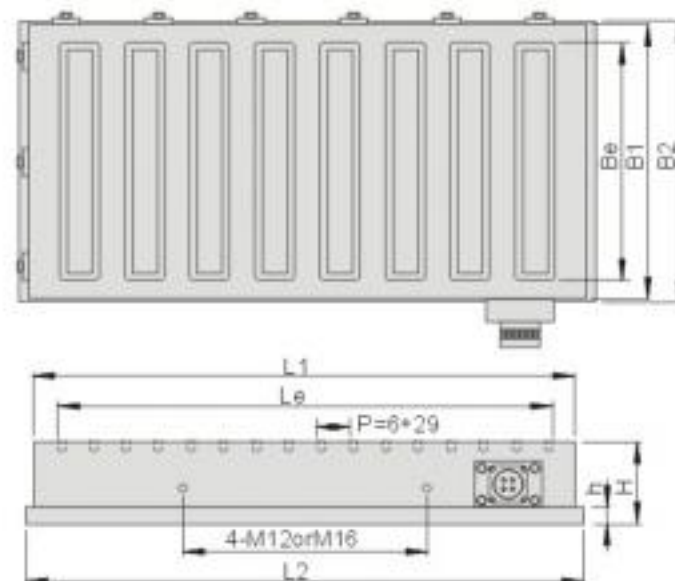


**54560**
**EPM-E**
**Super Powerful Electro-Permanent Magnetic Chuck**


LxWxH:330x300x120mm

### Features :

- ▶ Suitable for CNC machining center, Double-column Machining center or NC milling machine.
- ▶ Magnetic density up to 4000 gauss with light weight design which greatly reduce mechanical wear.
- ▶ Brazing top plate with excellent water resistant & high insulation resistance.
- ▶ Magnetic force beyond 18 Kg/cm<sup>2</sup> averagely



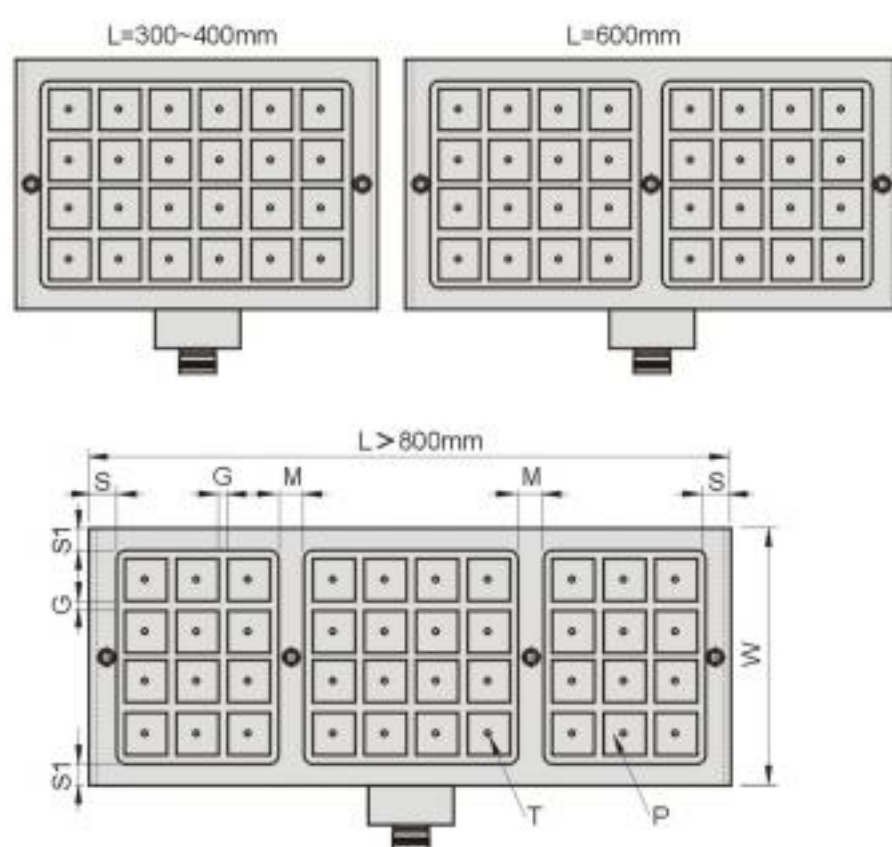
Order No.	Model	Spec.	B1	Be	L1	Le	Pitch	B2	L2	h	H	N.W.
54560-02	EPM-2050E	200X520	200	164	520	486	35 (6+29)	204	540	19	85	62kg
54560-04	EPM-2550E	250X520	250	214				254	540			78kg
54560-06	EPM-3060E	300X600	300	260	600	571		304	620			108kg
54560-08	EPM-4040E	400X400	400	360	400	352		404	420			96kg
54560-10	EPM-4050E	400X520			520	486			540			120kg
54560-12	EPM-4080E	400X810			810	770			830			192kg
54560-14	EPM-40100E	400X1000			1000	948			1020			240kg
54560-16	EPM-5050E	500X520	500	460	520	486		540	150kg			
54560-18	EPM-50100E	500X1000			1000	948		504	1020			300kg
54560-20	EPM-50150E	500X1500			1500	1447		1520	450kg			
54560-22	EPM-6060E	600X600			600	571		620	216kg			
54560-24	EPM-60100E	600X1000	600	560	1000	948		604	1020			360kg
54560-26	EPM-60150E	600X1500			1500	1447	1520		540kg			

Unit:mm

MAGNETIC TOOLS

# Magnetic Chuck

## 54600 EPM Electro-control Permanent Magnetic Chuck



### Features :

- ▶ Electro-control Permanent magnetic chuck structure design: 1~6 seconds charging and demagnetization, built-in permanent magnet (NdFeB) No need for continuous power supply, no temperature rise, no deformation and keep processing accuracy.
- ▶ With application of Spring Block, 5-faces processing can be done with drill, tapping, milling, increase work efficiency and improve repeating accuracy.
- ▶ Suitable for small & medium size workpiece and rough, drilling and fine processing, min. Thickness required at least 10mm.
- ▶ Best application is that at least 4 poles contact with workpieces.
- ▶ With application of Fixed Block, irregular and surface bending workpieces can be clamped for processing.
- ▶ Magnetic force up to  $1250\text{KG} \pm 5\%/100\text{mm}^2$ .
- ▶ Voltage : AC 220V / 1PH



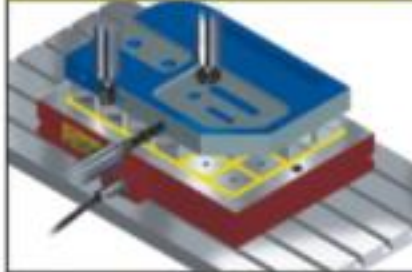
Please use the triangle as the basis point when installing the fixed blocks.

Unit:mm

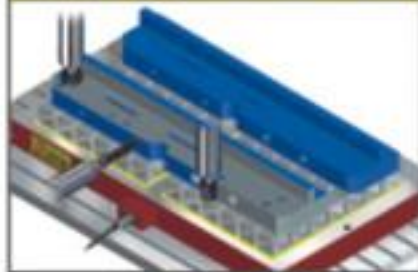
Order No.	Model	W	L	M	S	S1	T	Height	G	P	Pole Qty	Current AMP	N.W.	
													Controller	Magnetic
54600-02	EPM2540W	240	430	--							18	18A		50kg
54600-04	EPM2560W	240	590	30							24	30A		69kg
54600-06	EPM2580W	240	810	30							33	30A		92kg
54600-08	EPM2590W	240	870	30							36	18A		98kg
54600-10	EPM25100W	240	990	30							42	26A		111kg
54600-12	EPM3030W	300	310	--							16	20A		44kg
54600-14	EPM3040W	300	430	--							24	30A		61kg
54600-16	EPM3060W	300	590	30							32	30A		82kg
54600-18	EPM3080W	300	810	30							44	25A		116kg
54600-20	EPM3090W	300	870	30							48	30A		123kg
54600-22	EPM30100W	300	990	30							56	35A		138kg
54600-24	EPM4040W	420	430	--							36	18A		84kg
54600-26	EPM4050W	420	490	--	30	25	M8	60	Pitch 10	50x50	42	26A	12kg	95kg
54600-28	EPM4060W	420	590	30							48	30A		100kg
54600-30	EPM4080W	420	810	30							66	30A		159kg
54600-32	EPM4090W	420	870	30							72	18A		169kg
54600-34	EPM40100W	420	990	30							84	26A		193kg
54600-36	EPM5060W	480	590	30							56	35A		129kg
54600-38	EPM5080W	480	810	30							77	30A		185kg
54600-40	EPM5090W	480	870	30							84	26A		196kg
54600-42	EPM50100W	480	990	30							98	30A		219kg
54600-44	EPM6060W	600	590	30							72	18A		165kg
54600-46	EPM6080W	600	810	30							99	30A		215kg
54600-48	EPM6090W	600	870	30							108	27A		240kg
54600-50	EPM60100W	600	990	30							126	32A		274kg
54600-52	EPM8080W	755	810	30							121	33A		271kg



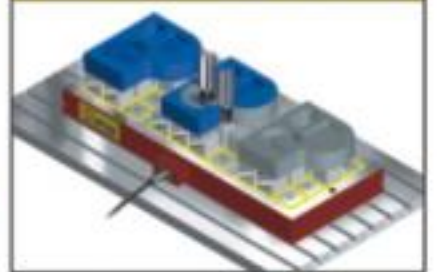
Side drilling and surface milling



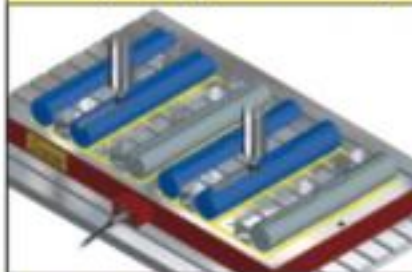
Multiple processing with multiple workpieces



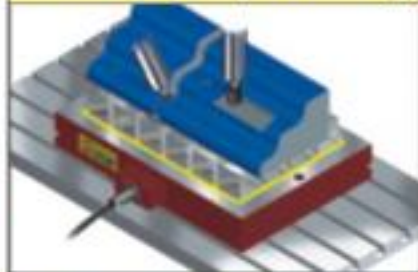
5-faces processing and boring



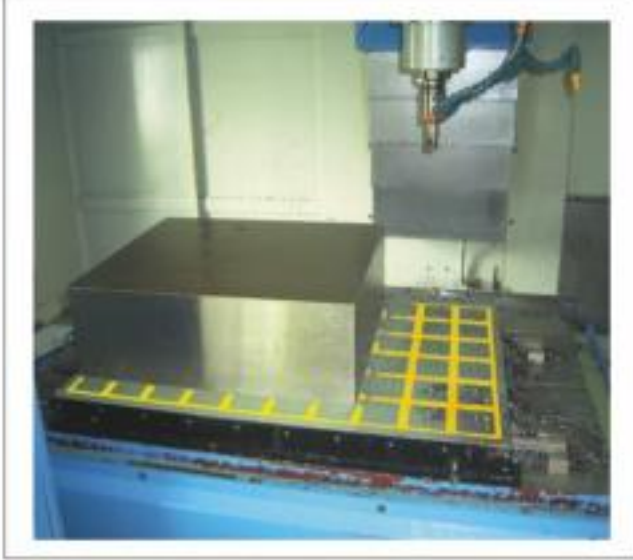
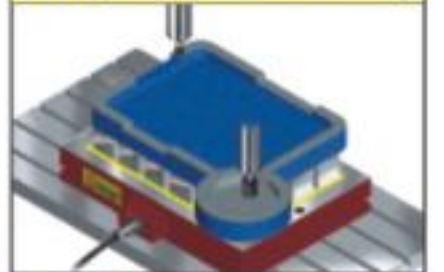
Irregular processing



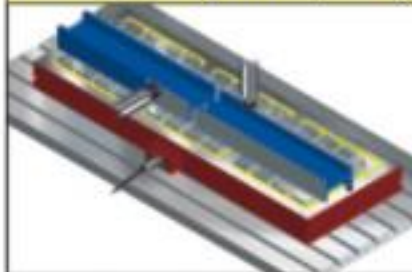
Mold base 3D processing



Straight line and side milling



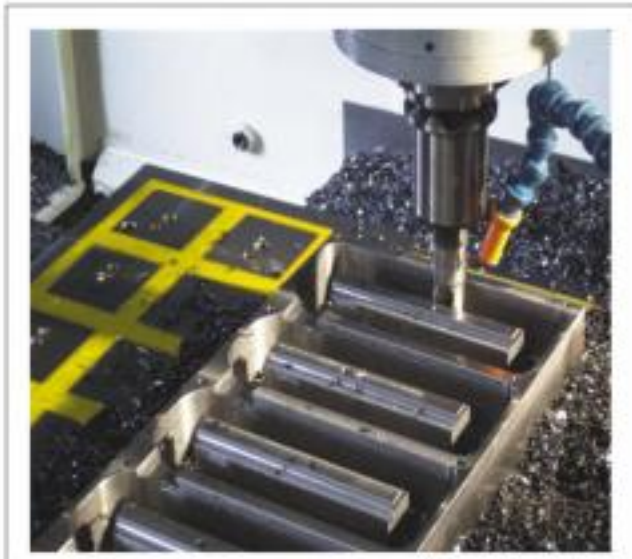
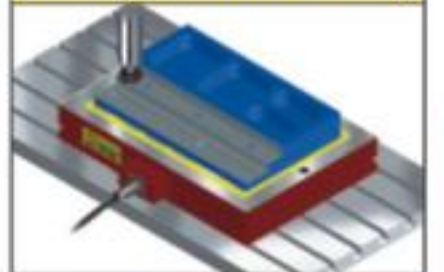
Round workpiece milling and surface processing



Horizontal workstation processing



Casting iron surface milling



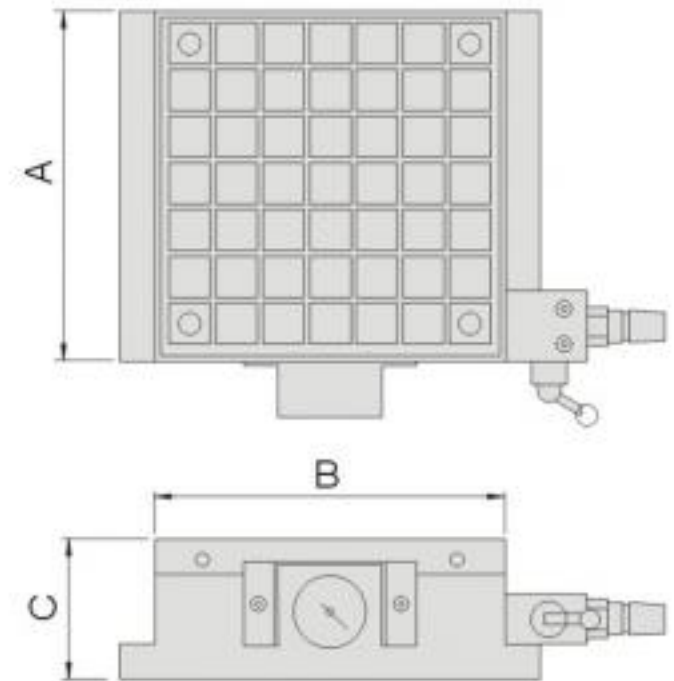


# Magnetic Chuck

**54610**

VLC

Vacuum Chuck



## Features :

### 1.No pump needed

Vacuum ejector and can operate simply through compressor. Vacuum Chuck can discharge cooling oil. Cooling water or rubbish etc... even machine had inhaled.

### 2.Perfect performance on any types of workpieces

Perform well with surface and side processing as well as grinding processing.

With application of metal plate, it can achieve side processing and even drilling.

### 3.Flexibility size

Depending on the workpieces' size, this product is flexible to setup bases.

### 4.Key bottom & Work stabilizer

Key bottom at the base bottom to ensure parallel and squareness when apply parallel.

Avoiding horizontal pressure by setting up work stabilizer at side.

### 5.Suitable application

Light metal, heavy metal and iron board.

Plastic products, ceramics, glass, stainless, aluminum, wood, stone, all non-magnetic products and non-ventilation smooth products.

Small, flat surface but need complicated work.

Need overall processing workpieces but nowhere effectively clamped.

Workpiece that don't want to leave surface scratches, distortion when processing.

Workpiece that is super thin and no where to clamp

Workpiece that is Irregular shape and surface smooth

- Parallelism:0.015mm/100mm
- Material: S55C
- Product: black oxide & top & bottom ground
- Character: airflow circuit to conceal
- Plate: heat treatment
- Accessory: silicone  $\varnothing$ 4x 2 meter

Unit:mm

Order No.	Model	A	B	C	Air Consumption	Max. Suction	N.W.
54610-01	VLC-1515	150	150	50	23 l/min	12 l/min	9.2kg
54610-02	VLC-1530	150	300	50	23 l/min	12 l/min	13.7kg
54610-03	VLC-2020	200	200	50	46 l/min	24 l/min	12.1kg
54610-04	VLC-2040	200	400	100	46 l/min	24 l/min	22.2kg
54610-05	VLC-2525	250	250	100	78 l/min	40 l/min	16.4kg
54610-06	VLC-2550	250	500	100	78 l/min	40 l/min	30.6kg
54610-07	VLC-3030	300	300	100	23 l/min	12 l/min	23.4kg
54610-08	VLC-3045	300	450	100	46 l/min	24 l/min	37.0kg
54610-09	VLC-3060	300	800	100	46 l/min	24 l/min	48.8kg
54610-10	VLC-3075	300	750	100	46 l/min	24 l/min	50.4kg
54610-11	VLC-4040	400	400	100	46 l/min	24 l/min	42.5kg
54610-12	VLC-4060	400	600	100	92 l/min	48 l/min	82.7kg
54610-13	VLC-4080	400	800	100	92 l/min	48 l/min	72.9kg
54610-14	VLC-40100	400	1000	100	92 l/min	48 l/min	103.1kg
54610-15	VLC-5050	500	500	100	78 l/min	10 l/min	59.2kg
54610-16	VLC-5075	500	750	100	15 l/min	80 l/min	87.8kg
54610-17	VLC-50100	500	1000	100	15 l/min	80 l/min	116.4kg
54610-18	VLC-50125	500	1250	100	15 l/min	80 l/min	145.0kg
54610-19	VLC-6060	600	600	100	78 l/min	40 l/min	78.8kg
54610-20	VLC-6090	600	900	100	15 l/min	80 l/min	116.4kg

1)If the workpiece is high adhesive and made of soft material, chips may malt on the cutter. It is suggested that Coolant fluid is suggested applying steadily on the cutter.

2)Workpiece must be larger than the O ring applied, or it would not be properly attracted.

Start operation right away as combine

None magnesium alloy



The chuck apply for milling machining or grinding machine to process the surface and side

Features	
1	Change the chuck's size depend on the workpiece's size
2	No need air pump, just connect the air compressor then start the operation
3	Any workpiece can be done very well
Suitable Material	
Light metal, hard metal, plastics, ceramics, glass, aluminum alloy, stainless steel...etc none paramagnet and no ventilated plane.	

※workpiece has to over the size of the sillcon or can not be inhaled

Using approach	
Use semi-automatic milling machine to process	
Notices	
1	Use air pressure to suction the workpiece and make operation
2	The air pressure should match the workpiece's size and get the max inhaled square measure
3	Air supplier should be stable
4	Check Seal's condition and whether the material airtight
5	The inhaled square measure and ventilation of workpiece
6	Temperature, humidity and curved extent

# Magnetic Chuck

**54620**

GLM

Permanent Lifting Magnetic

GLM100



GLM300



GLM600



GLM1000



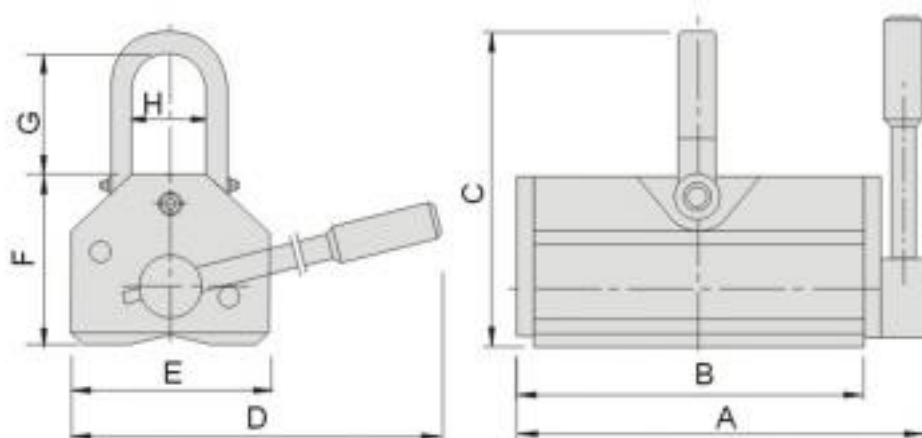
GLM2000



GLM3000

## Features :

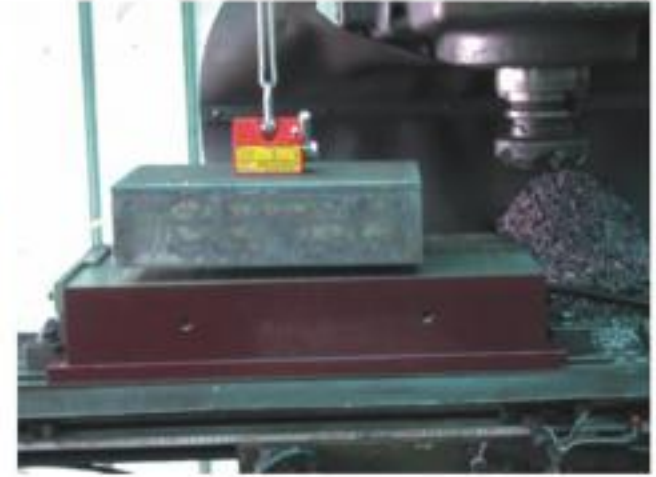
- ▶ **Safety**  
Lifting magnetic ensure the stable magnetic force and tested to hold 3.5 TIMES, the rated load for maximum safety.
- ▶ **Rigidity**  
Adopting steel block and machined by CNC and FNC system for ensure accuracy and rigidity.
- ▶ **Durability**  
Nickel-plating on all parts of steel to increase lifecycle, enhance surface hardness on all poles to ensure the best operation condition, maintenance free.
- ▶ It's perfect for loading or unloading most workpieces including press molds, plastic molds, machined parts, etc...
- ▶ Apply this lifting magnetic to move plate steel, block or round steel, and iron material in your factory.
- ▶ Permanent magnetic requires no electricity to perform material lifting.
- ▶ Safety factor tested hold up to 3.5 times.
- ▶ Fast, safe & efficient material lifting, loading and unloading.



Unit:mm

Order No.	Model	Capacity (kg)	A	B	C	D	E	F	G	H	Safety factor	N.W.
54620-02	GLM100	100	107	84	129	123	60	71	46	30	x3.5	2.5kg
54620-04	GLM300	300	180	155	157	185	90	93	51	41		8.6kg
54620-06	GLM600	600	255	224	213	263	115	120	77	52		21kg
54620-08	GLM1000	1000	294	259	286	377	163	169	97	87		46kg
54620-10	GLM2000	2000	422	380	355	515	216	215	105	123		118kg
54620-12	GLM3000	3000	587	521	423	710	216	232	158	80	x3.0	181kg

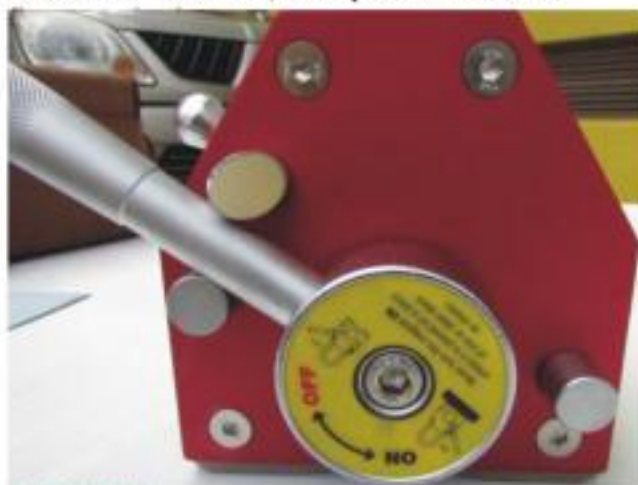
## Applications



MAGNETIC TOOLS

**Instruction**  
NO/OFF switch, easy and fast as

**ON**



**OFF**



**Caution!**  
Lever in the "ON" position. Note the safety lock is engaged on the lifting magnetic.